



Central Asia: A Land of Many Mountains

Jean-Claude Latombe
Computer Science Department,
Stanford University

<http://ai.stanford.edu/~latombe/mountain/index.htm>



















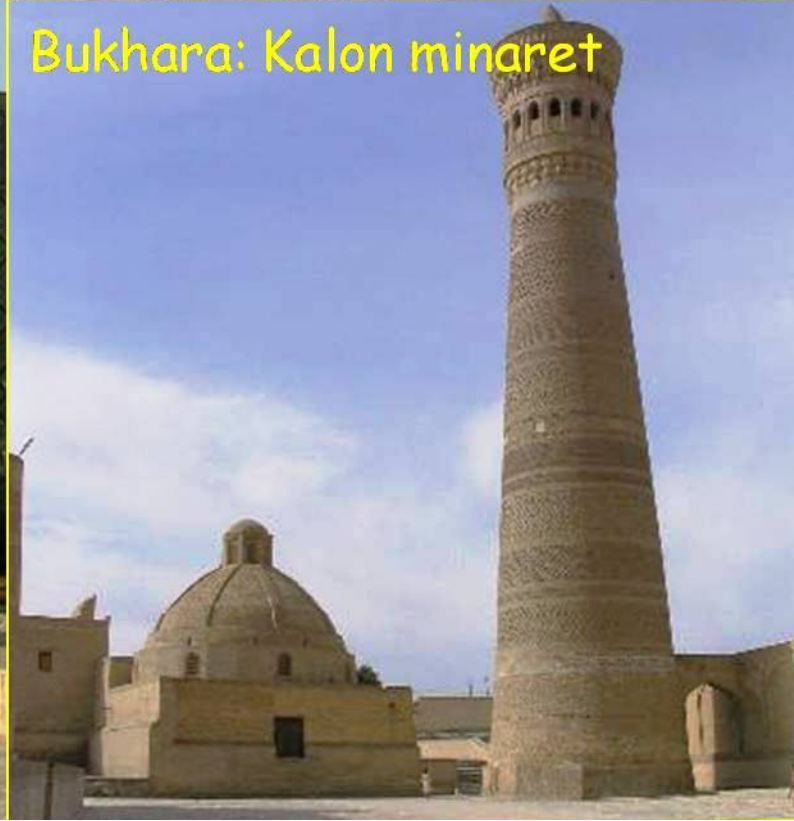
Samarkand: Registan

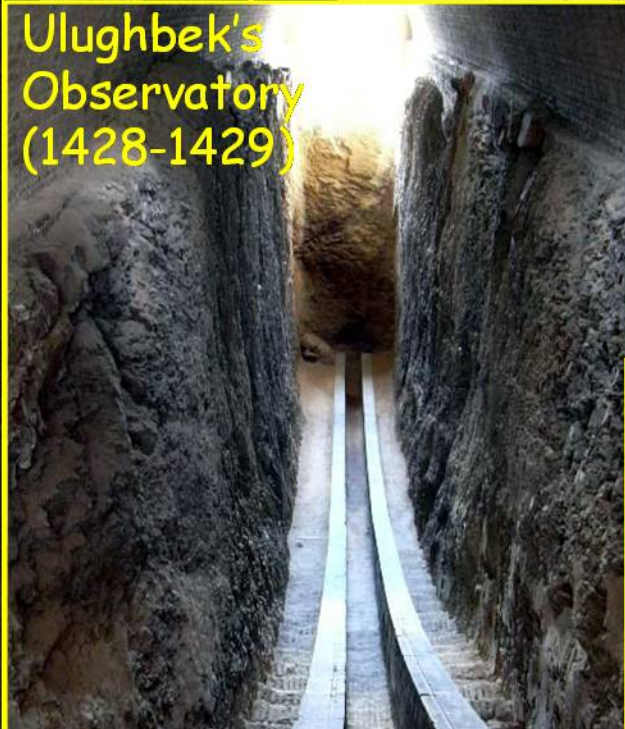
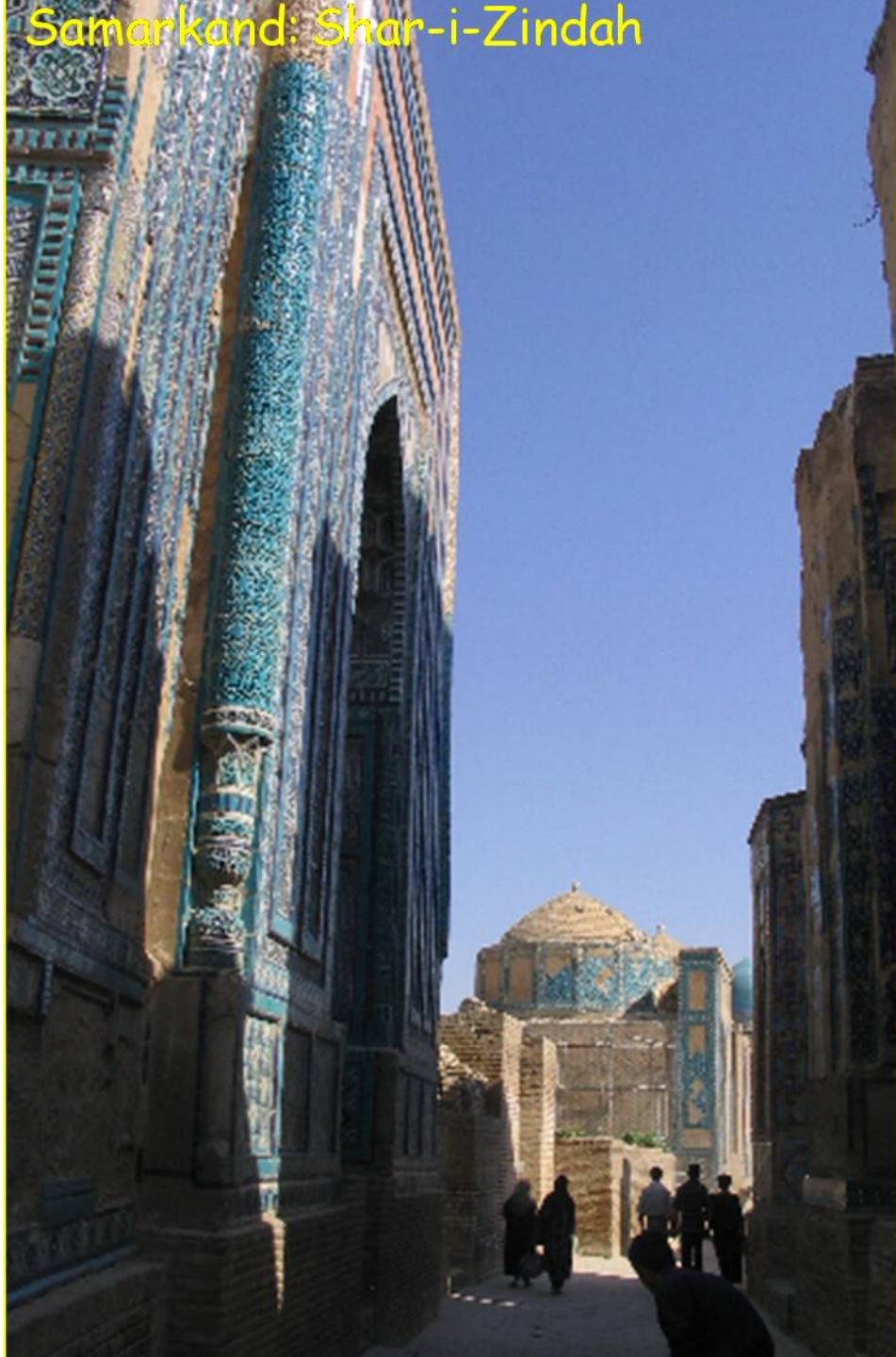


Bukhara: Char Minar



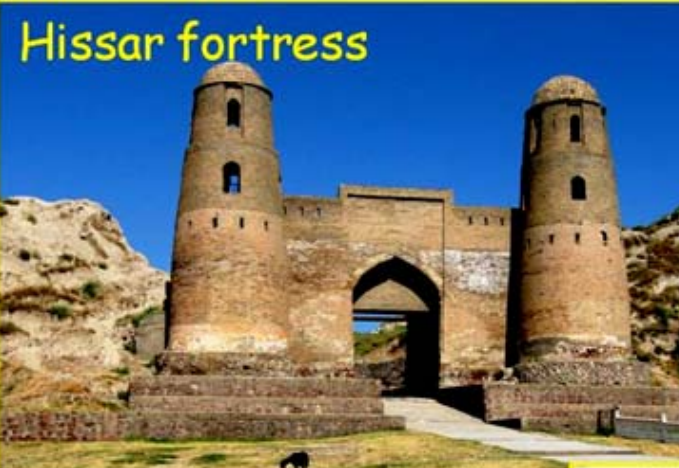
Bukhara: Kalon minaret





Ak Saray Palace in Shahrisabz





Hissar fortress



13m-long sleeping Buddha, Dushanbe Museum



Bamyan's standing Buddha



Fortress in Wakhan corridor



Buddhist stupa in Vrang



Paintings of Alisher Alikulov



Puppets of Iskandar Khakimov



Wood sculptures in Terskey Alatau

Earth, water, air and fire



Typical roof of a Pamiri house



KAZAKHSTAN

Tien-Shan

Turkestan (Pamiro-Alay)

UZBEKISTAN

Almaty

KYRGYZSTAN

Pamir

Fann mountains

Kokshaal-Too

Karakoram

Wakhan corridor

Indu Kouch

Karakoram

Himalaya

AFGHANISTAN

Peshawar

HIMALAYAS

ALTAI

STYURT

TURKMENISTAN

CHINA
XINJIANG

Sabzevār

Mashhad

Kābul

Peshawar

Mardan

Srinagar

Bojnūrd

Mary

Bayramaly

Chārjew

Qarshi

Denow

Dushanbe

Kūlob

Feyzābād

Nawoiy

Bukhoro

Samargand

Jizzakh

Toshkent

Namāngan

Qūqon

Andijon

Osh

Kochoi

Aral Sea

Qyzylorda

Bishkek

Pik Pobeda

7,439 m
(24,406 ft)

Pik Ismail
Samani 2,495 m
(24,590 ft)

K2 8,611 m
(28,251 ft)

Qā'en

Torbat-e Jām

Qal'eh-ye Nowi

Herāt

Harirūd

Meymaneh

Sheberghān

Mazār-e Sharīf

Pol-e Khomrī

Jalāmābād

Mardan

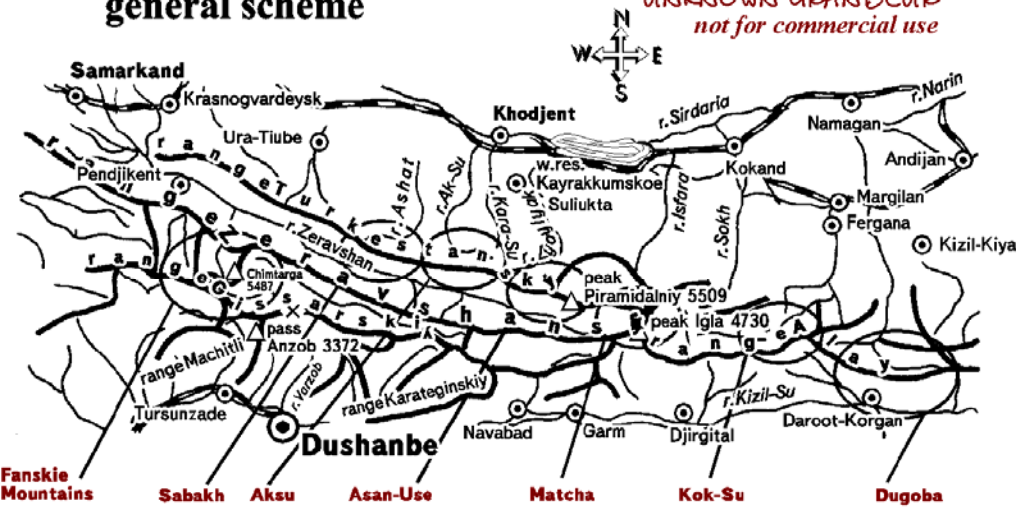
Chakwā

Slaktot

Bannu

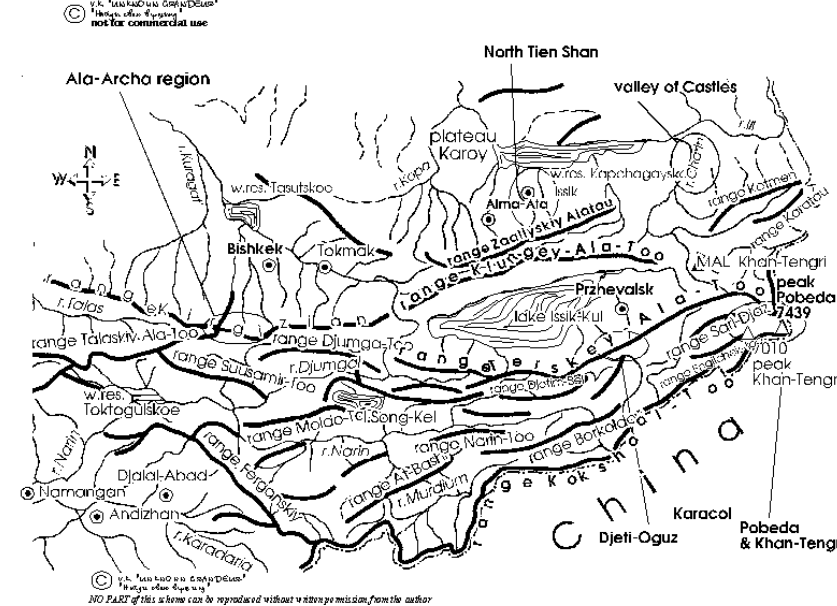
Ghazni

Pamiro Alai region general scheme



© Vladimir Kopylov (V.K.)
UNKNOWN GRANDEUR
not for commercial use

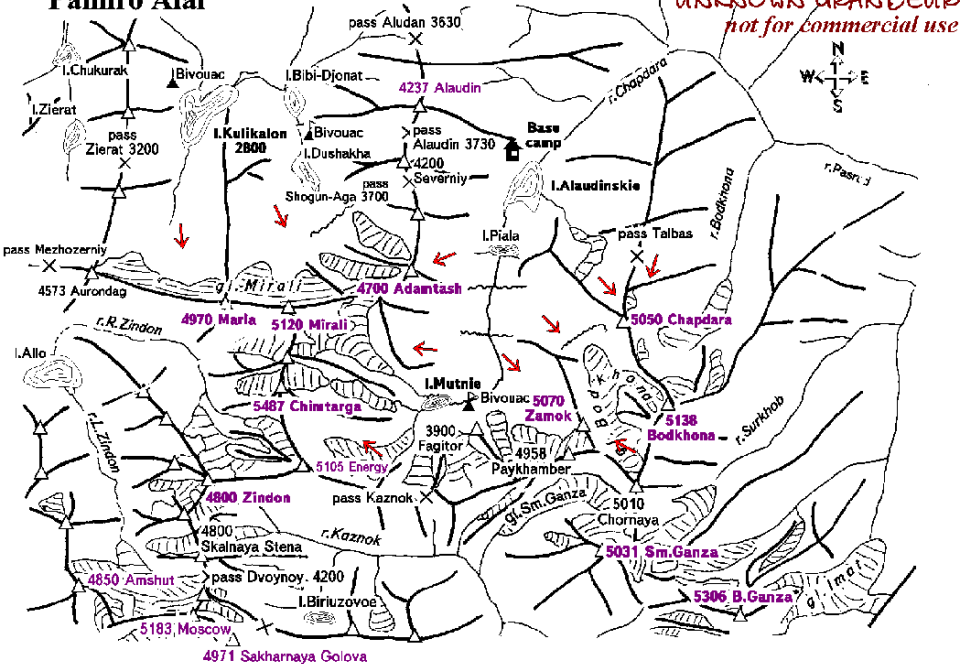
Tien Shan general scheme



© Vladimir Kopylov (V.K.)
UNKNOWN GRANDEUR
not for commercial use

<http://www.sft.fact400.ru/engl/person/kopylov/climbing.htm>
No part from this scheme can be reproduced without written permission

Fanskiye mountains Pamiro Alai



© Vladimir Kopylov (V.K.)
UNKNOWN GRANDEUR
not for commercial use

<http://www.sft.fact400.ru/engl/person/kopylov/climbing.htm>
No part from this scheme can be reproduced without written permission

Pamir general scheme



Communism - Korjenevskoy peaks region
Revolution peak region
Lenin peak region

© Vladimir Kopylov (V.K.)
UNKNOWN GRANDEUR
not for commercial use

<http://www.sft.fact400.ru/engl/person/kopylov/climbing.htm>
No part from this scheme can be reproduced without written permission

- 1970: Afghanistan
- 1998: Ala Archa, Terskey Alatau, Khan Tengri
- 2000: Karakoram highway, Muztagh Ata
- 2004: Aksu, Kichi Alai, Fann mountains
- 2005: Matcha
- 2006: Fann mountains
- 2008: Kokshaal-Too, Visokiy Alay
- 2009: Shakhdara range, Vanch valley



Shan

Pamir

Fann mountains

Kokshaal-Too

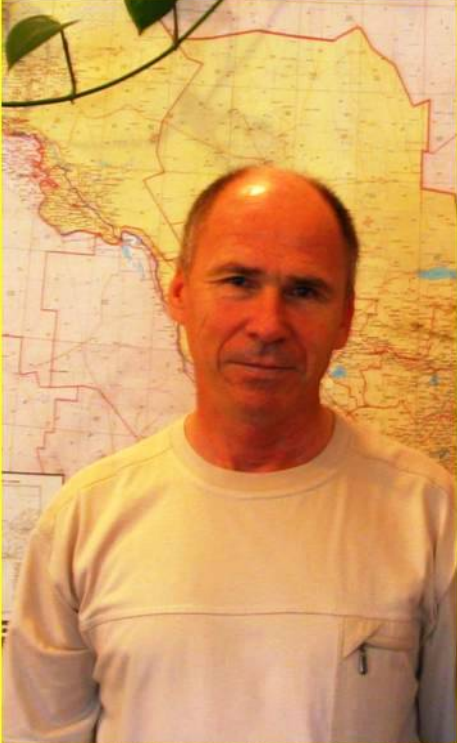
Karakoram

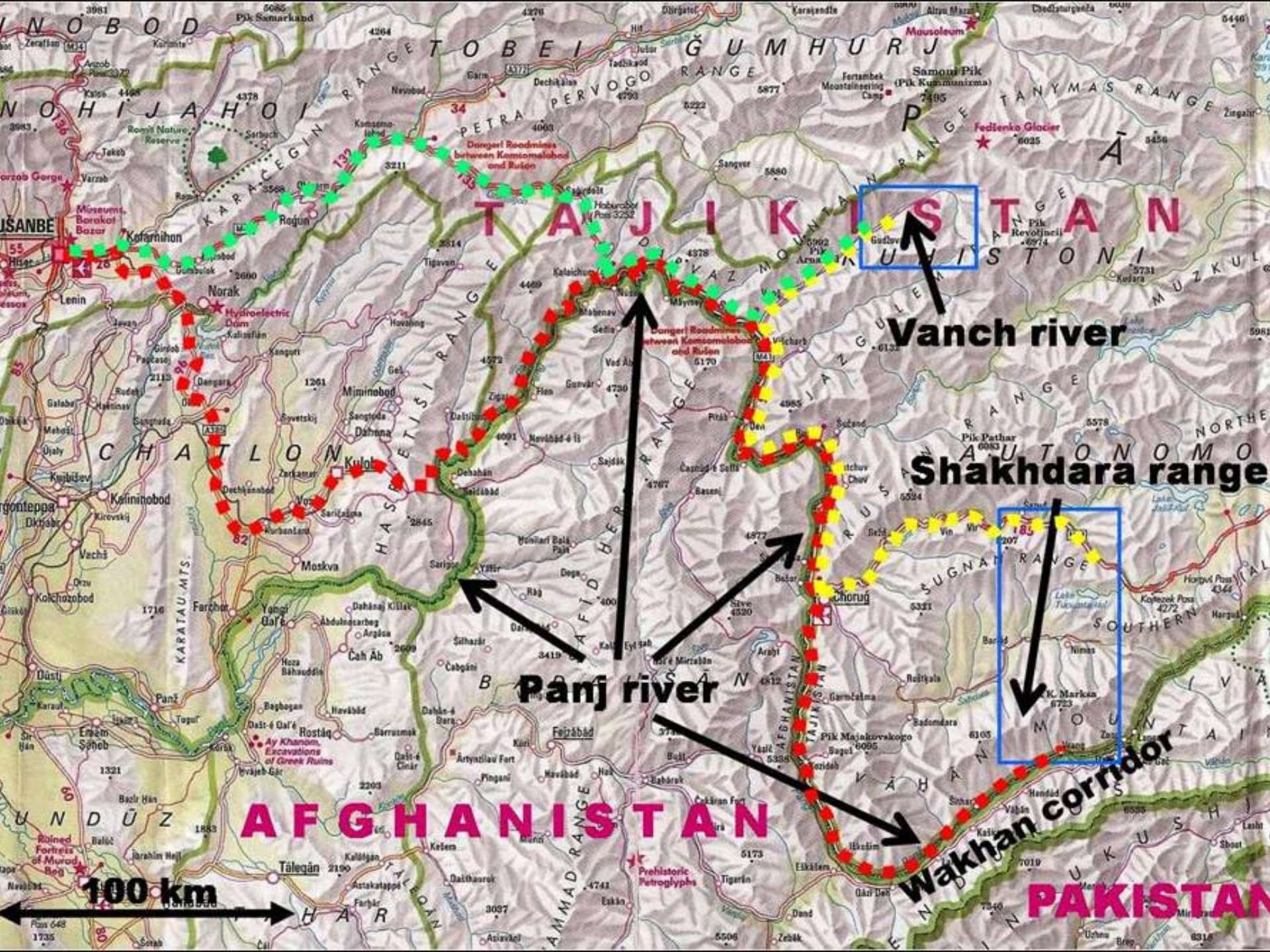
Indu Kouch

Wakhan corridor

Karakoram

Himalaya





Vanch river

Shakhdara range



Panj river

Wakhan corridor

AFGHANISTAN

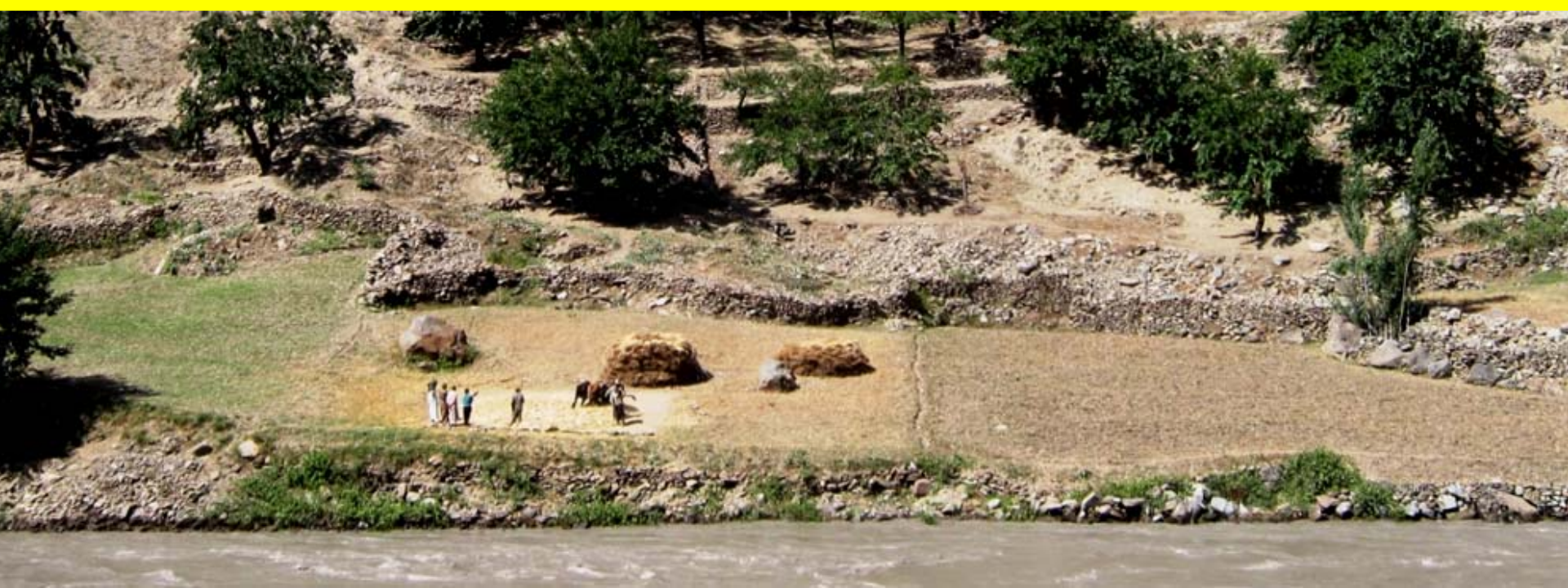
PAKISTAN

100 km



Panj river

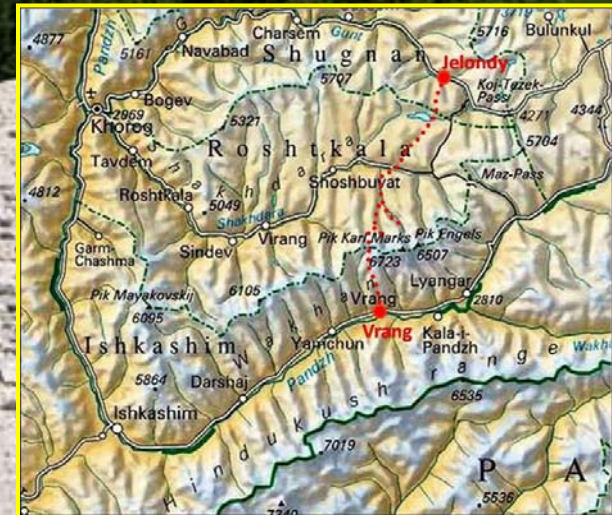




Wakhan Corridor



Traverse of Shakhdara Range







Peak Engels (6507m)

Peak Karl Marx (6723m)



Peak Engels (6507m)





Lake Turumtajkul



Kyzyl-Asker (5842m) in Kokshaal-Too range

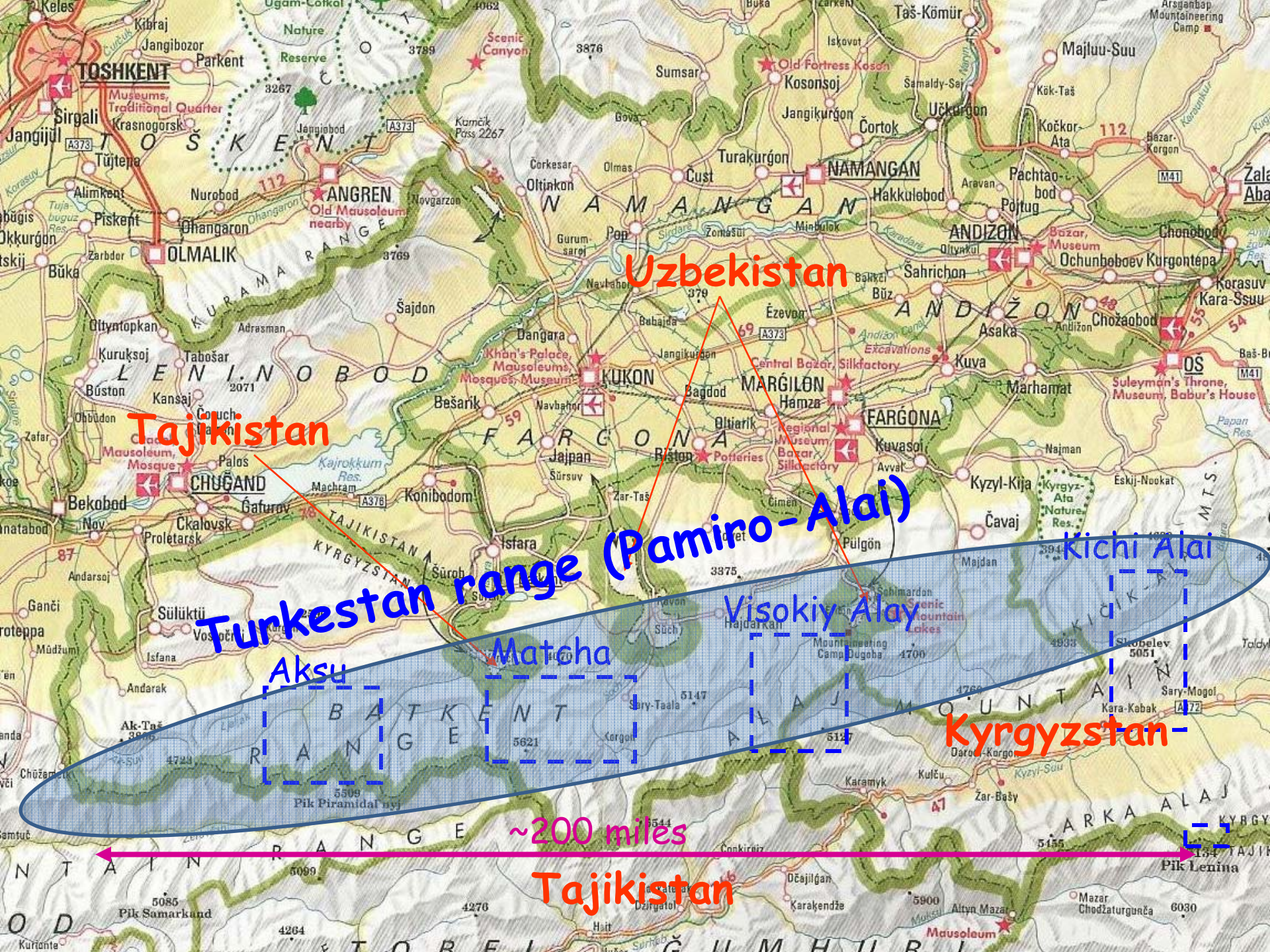


Kyzyl-Asker (5842m) in Kokshaal-Too range



Marco Polo sheep





Uzbekistan

Tajikistan

Turkestan range (Pamiro-Alai)

Kichi Alai

Visokiy Alay

Aksu

Matcha

Kyrgyzstan

~200 miles

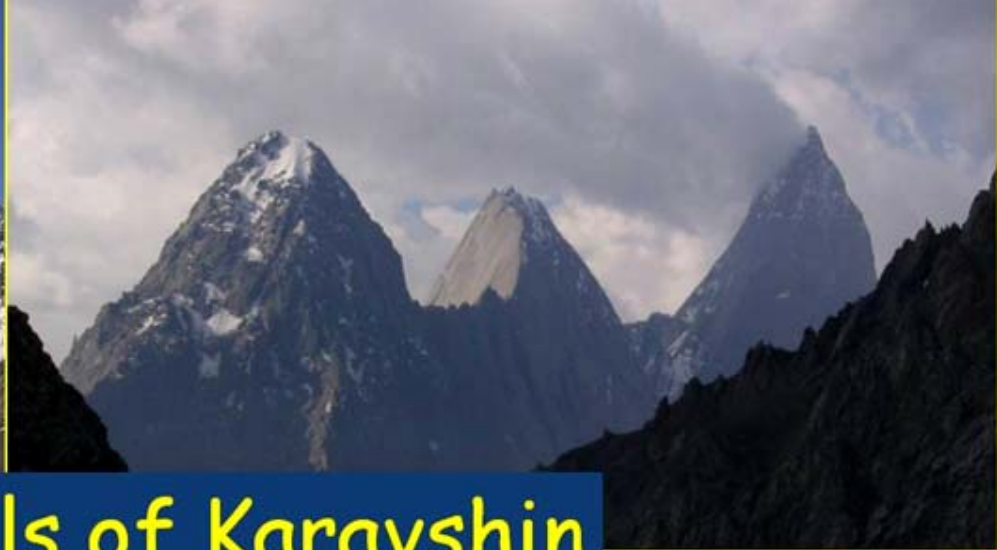
Tajikistan



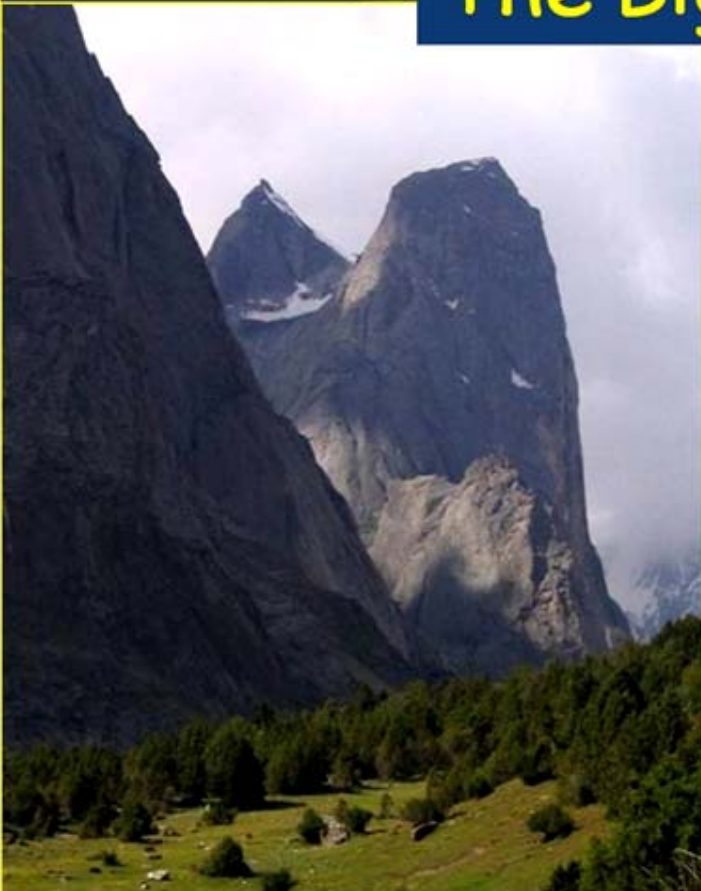
Peak Aksu (5355m)



Iskander (5120m)



The Big Walls of Karavshin



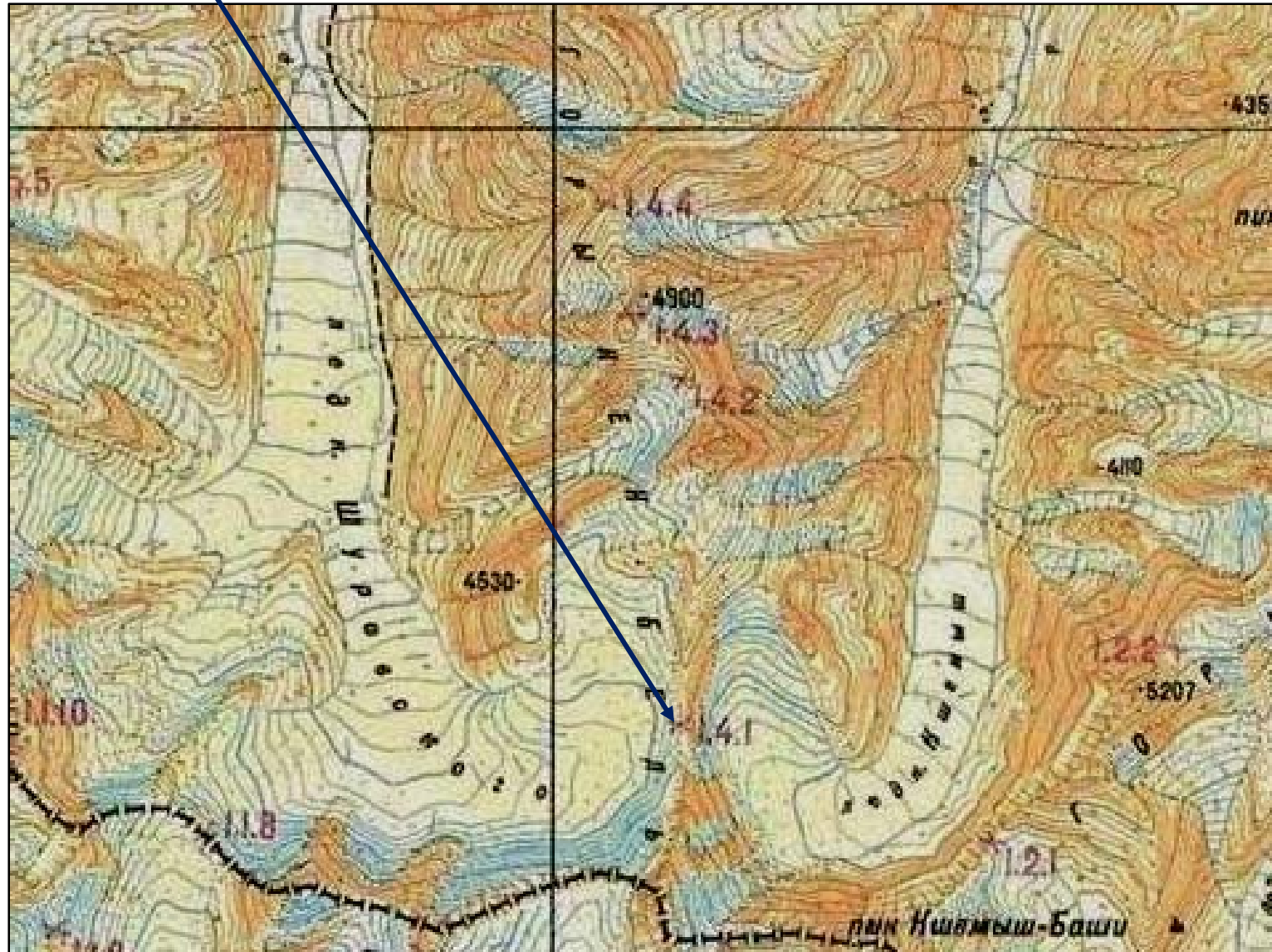
Matcha



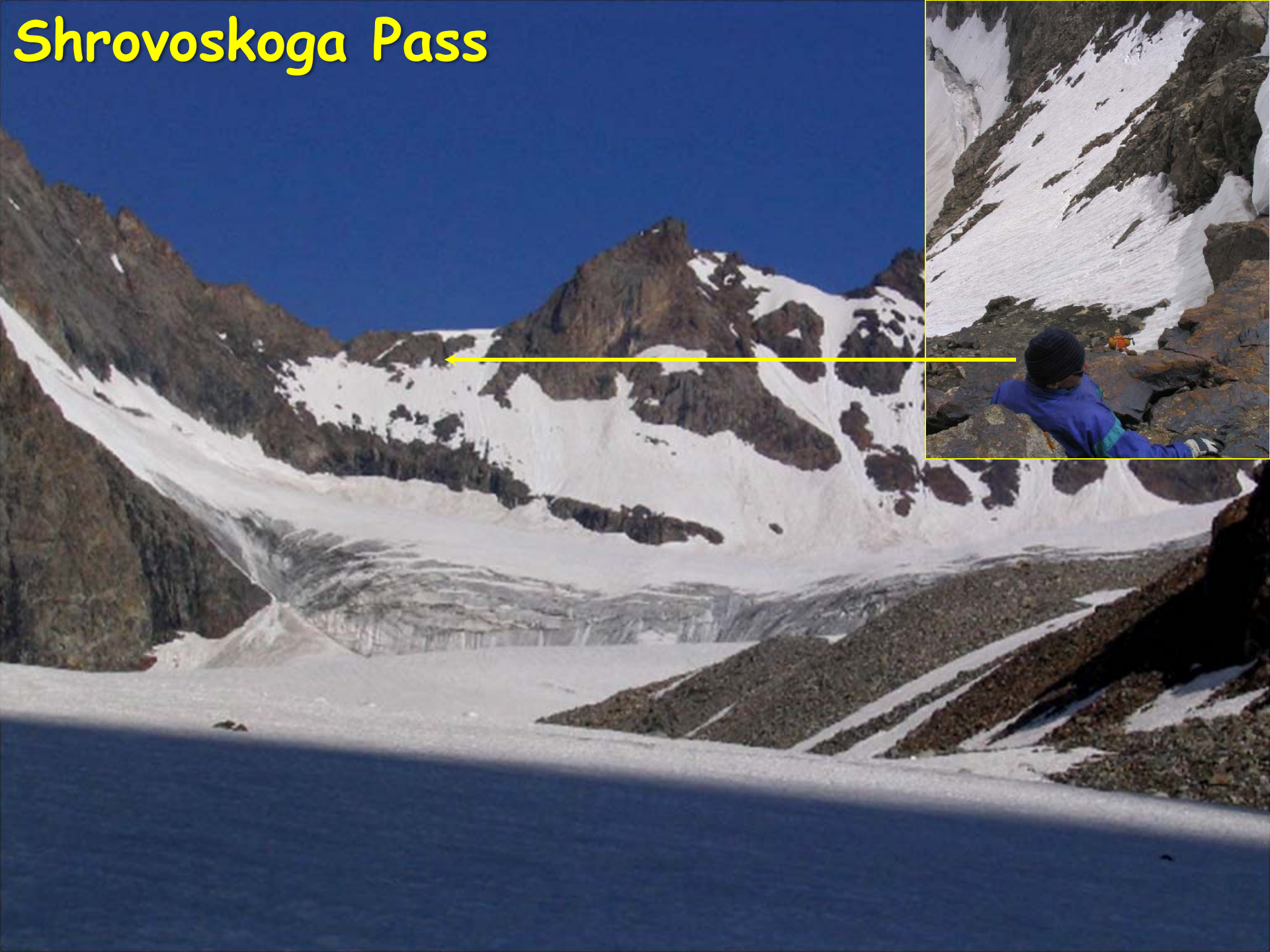
Peak Kshemysh



Shrovoskoga Pass



Shrovoskoga Pass





"Mushrooms" on the lower part of the Shurovski glacier







Chimtarga

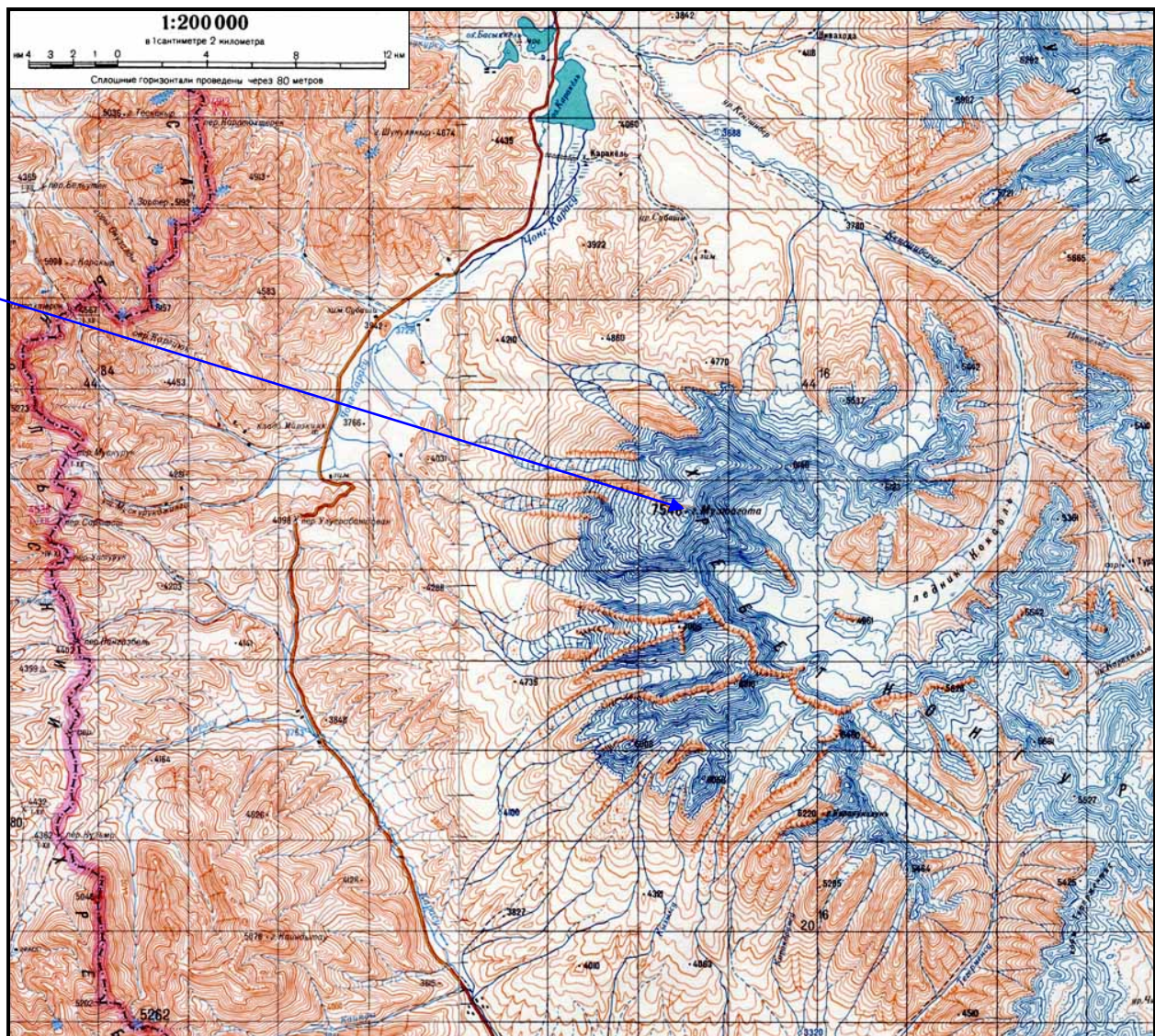




Muztagh Ata (7546m, ~25000ft)



Photo by Brad Jackson



Rakaposhi



Nanga Parbat



THE JUNCTION POINT OF THREE GREATEST MOUNTAIN RANGES OF THE WORLD

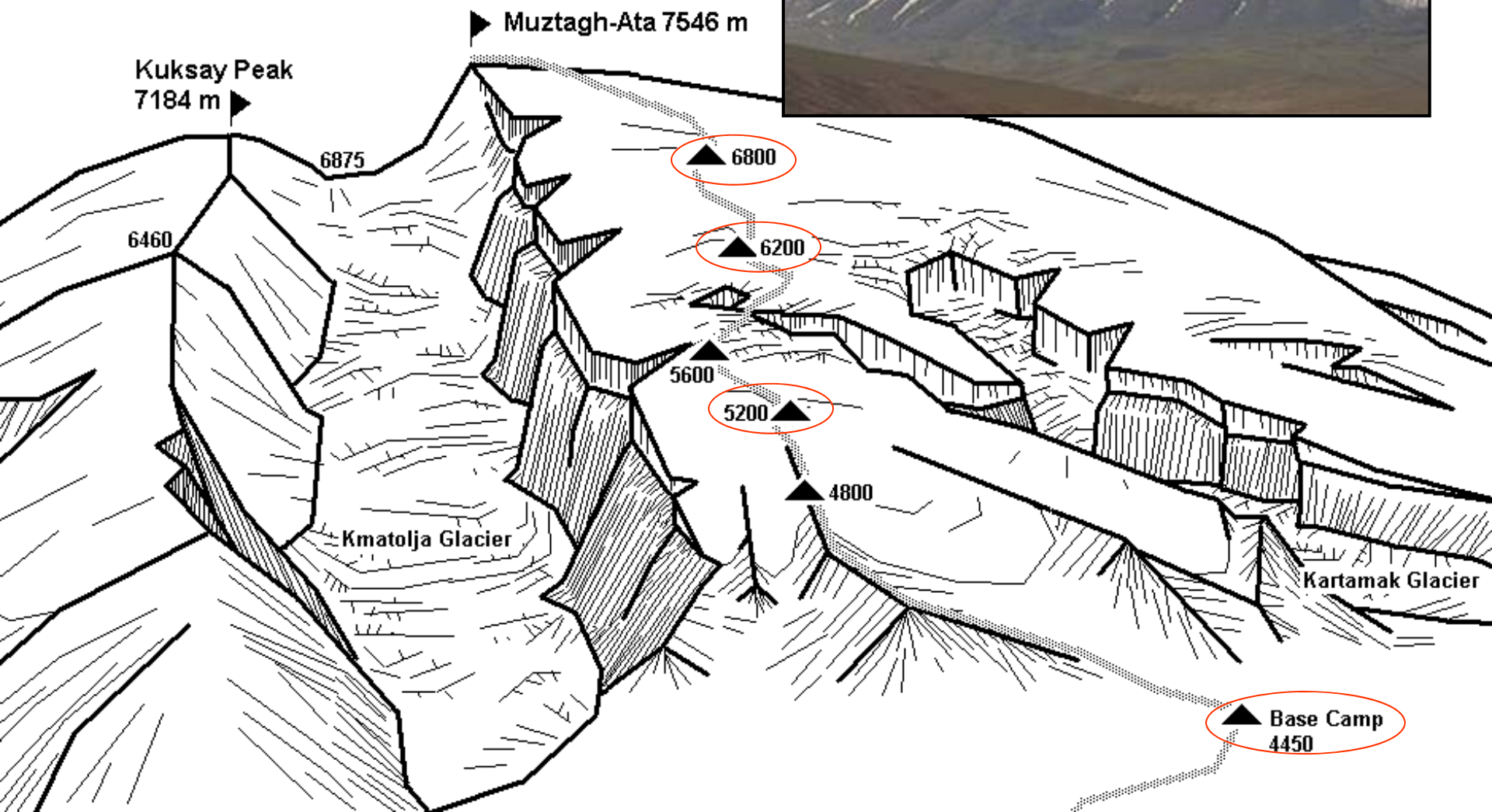
دُنیا کے تین عظیم پہاڑی سلسلوں کا ملحقہ مقام

From here you are seeing three mightiest mountain ranges of the world. Great Himalayas end in the south and east of Indus River. Karakoram are ending in the North East of Gilgit River. West of Gilgit/Indus Rivers is the Hindukash Range.

آپ یہاں سے دنیا کے تین عظیم پہاڑی سلسلے دیکھ سکتے ہیں۔ دریائے سندھ کے مشرق میں کوہ ہمالیہ ہے۔ دنیا کے شمال اور شمال مشرق میں کاراکورم اور کوہ قراقرم ہے۔ دریائے سندھ اور دریائے گیلگت کے جنوب میں کوہ ہندوکش ہے۔

۱۱ فاکسین کاراگل







Acclimatization/Climbing Schedule

- 1 night at 2400m (Karimabad)
- 1 night at 3200m (Ultrar BC)
- 1 night at 2700m (Gulmit)
- 1 night at 3600m (trek above Gulmit)
- 2 nights at 4050m (trek above Gulmit)
- 1 night at 3100m (Sost)
- 1 night at 3200m (Tashkurgan)
- 3 nights at 4400m (Muztagh Ata BC)
- 5 nights at 5200m (Camp 1)
- 3 nights at 6200m (Camp 2)
- 1 night at 6800m (Camp 3)

--



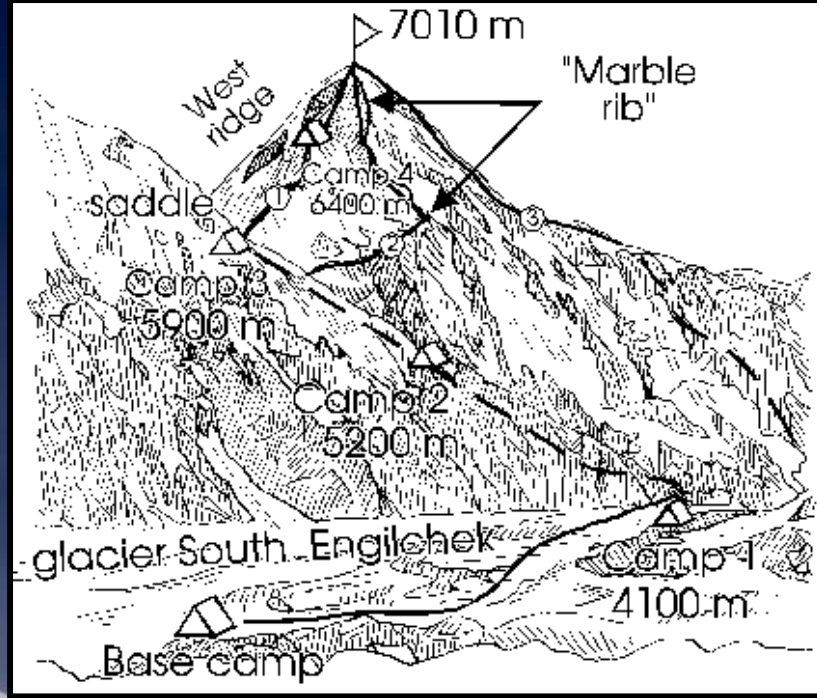




Khan Tengri (6995m, 22700ft)



Photo by Big Lee

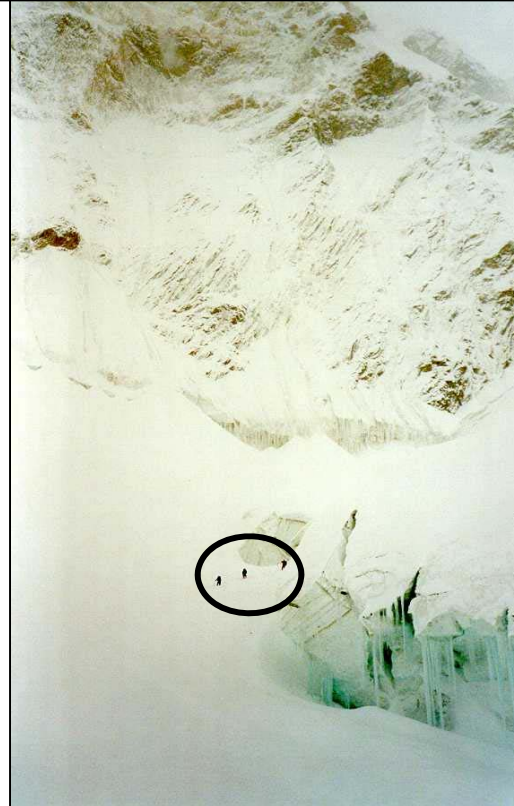
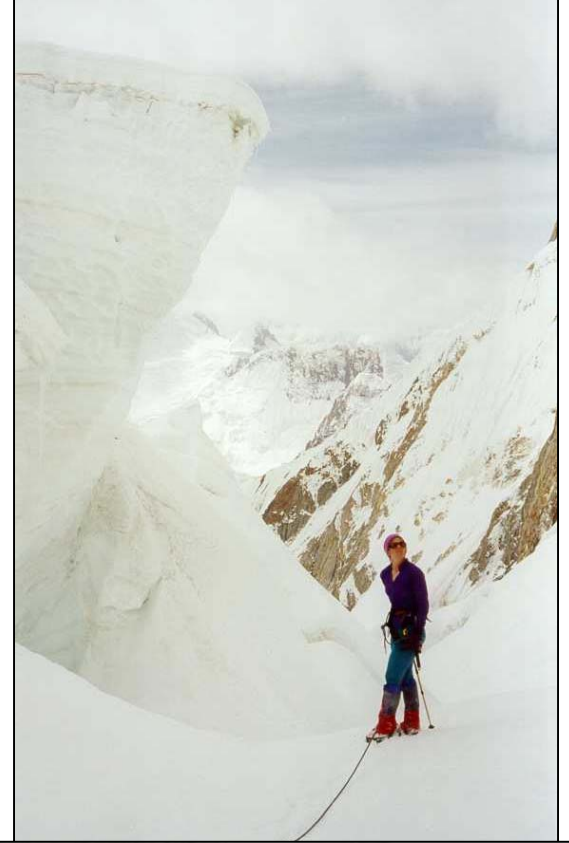




South Engilchek glacier



Semenovskogo glacier



Reaching the saddle above Semenovskogo glacier



Photos by VladimirKopylov



Camp at 5900m



Photo by VladimirKopylov



<http://ai.stanford.edu/~lalombe/mountain/index.htm>



THE END